



GEA Circulator Fan

For natural ventilated barns

- Corrosion proof, poly orifice ring for long life
- Comes with swivel mounting bracket for mounting to ceiling
- 1/2 HP direct drive motor 110/220V is variable-speed capable, and available in single or 3-phase power
- Six-nozzle mist kit available

Performance

- 11,800 CFM
- 22.7 CFM/Watt
- 825 RPM
- 2.5 AMPS/220V



Mounting options

Custom designed brackets — provide 100% adjustability, enabling the operator to maximize air flow over the cows. Circular fans hang from the top of the fan.

Holding areas — mount 36" fans in rows 8 ft. apart with the fans spaced 20-24 ft. apart blowing down on the cows. If low ceiling height is a problem, consider placing the fans on one side of the holding area blowing across.

Ideal for use with mist kits or shower nozzle system.



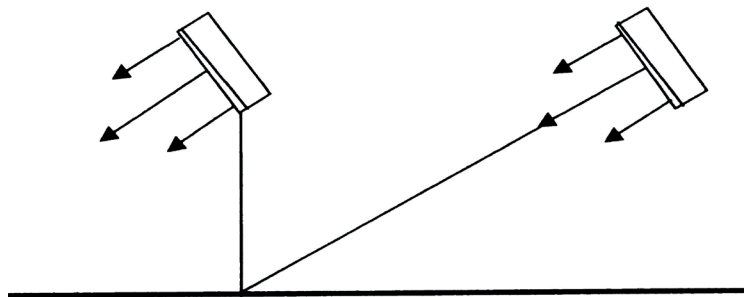
Feed line post mount



Wood or steel column

Fan placement suggestions

- Mount 36" fans 24 to 30 ft. apart
- Mount fans 8-10 ft. above the floor or cow platform
- Angle fans (approx. 30 degrees) so that air is directed towards animals



GEA North America

GEA Farm Technologies, Inc.
1880 Country Farm Drive, Naperville, IL 60563
Toll Free: 1.877.WS.DAIRY or 1.877.973.2479

GEA Farm Technologies Canada Inc.
4591 boulevard St-Joseph, Drummondville, QC J2A 0C6
Toll Free: 1.877.WS.DAIRY or 1.877.973.2479

gea.com